

## Mode-Switch Application Notice for NY3P(J) and NY3P(C)

**Description:** When the user executes the Mode-Switch function for the NY3P(J) and NY3P(C) series, it is recommended to enhance the protection of ESD to avoid external interference causing malfunctions.

**Reason:** When the Mode-Switch function of the NY3P(J) and NY3P(C) series is activated, the system will load the initial setting of another mode, if the external interference happens, it has chance that loading incorrect setting value and causes IC malfunctions.

**Solution:** When the Mode-Switch function is activated, please follow the instructions below to enhance the ESD anti-interference feature.

1. Set the Input Type of the Mode-Switch pin as CDS + 1.5M.
2. Connect a capacitor C1 in parallel between the Mode-Switch pin and GND as shown in the red box in the picture below. Please select the capacitance value through the table below

Diagram 1. The diagram example for Mode-Switch application.

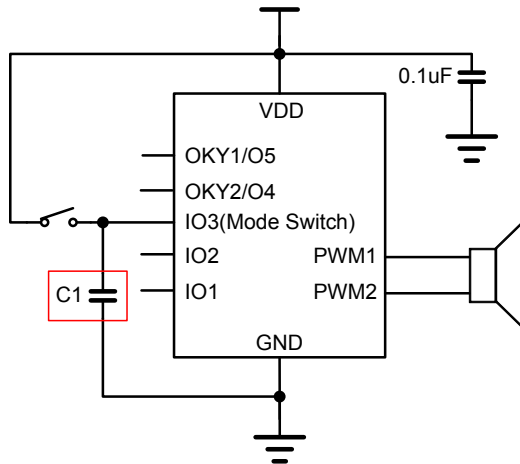


Table 1. The recommended capacitor C1 value.

C1 Capacitor
68~220pF

*Note: Please adjust the capacitor value by the actual circuit board of final product.*